

Pilot operated check valves CETOP 3 / NG06 RS-AM3UPAB1003



Ruhfus pilot operated check valves are designed for subplate mounting with an interface in accordance CETOP 3 (NG06) and they are compatible with many other manufacturers. The directional control valves are intended exclusively for use in industrial oil-hydraulic systems.

This type of modular check valves allow free flow in one direction by raising a conical seated poppet valve, while in the opposite direction the fluid can return by means of a small piston piloted by the other line pressure (piloted side). They are available on single A or B lines, and double A and B lines (see hydraulic symbols). A pre-opening version is also available (AM3UP1..) only with 5 bar spring.

Als Druckmedium werden Hydraulik-Mineralöle nach DIN 51524 empfohlen. Erforderlich ist eine Reinheit der Druckflüssigkeit nach NAS 1638, Klasse 10. Wir empfehlen hierzu Filter mit einer absoluten Filterfeinheit $\beta_{25} \geq 75$.

RS-Valves (RS-SV0602-004)

Stand: 19.05.2017 - V1.0

Ruhfus Systemhydraulik GmbH

Büdericher Straße 7

D-41460 Neuss

Telefon +49 (2131) – 914 – 6

Fax +49 (2131) – 914 – 820

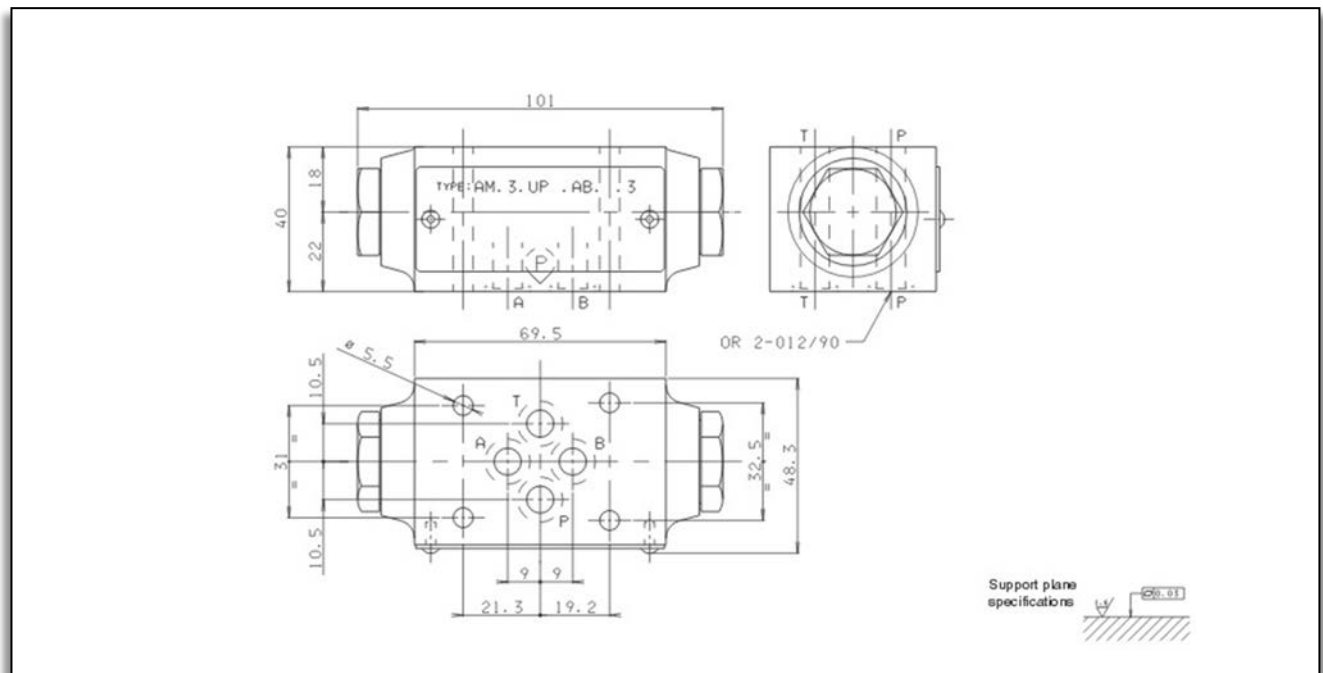
Internet <http://www.ruhfus.com>



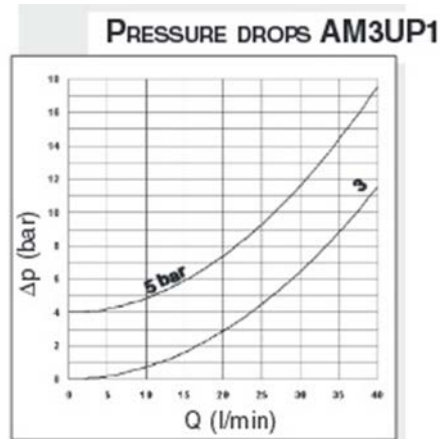
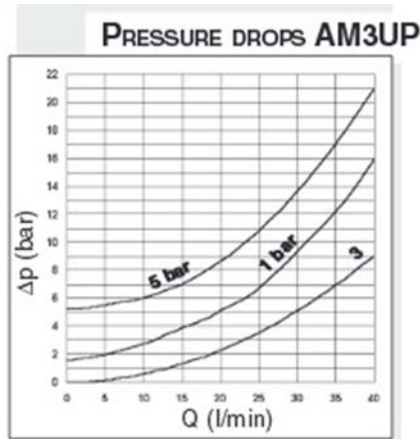
Technical specifications:

Max. operating pressure:	350 bar
Minimum opening pressure spring 1:	1 bar
Minimum opening pressure spring 5 :	5 bar
Piloting ratio AM.3.UP :	1 : 4
Piloting ratio AM.3.UP1 :	1 : 2,5
Max. flow:	40 l/min
Hydraulic fluids :	Mineral oils DIN 51524
Fluid viscosity :	10 – 500 mm ² /s
Fluid temperature :	- 25°C – 75°C
Ambient temperature :	- 25°C – 60°C
Max. contamination level :	class 10 in accordance with NAS 1638 with filter $\beta_{25} \geq 75$
Weight :	1,0 Kg

Overall Dimensions:



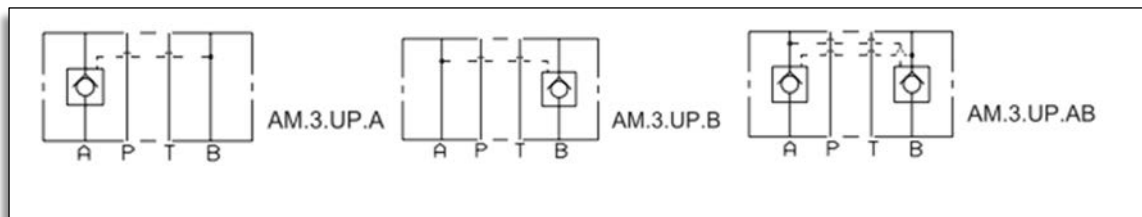
Pressure - Drops:



The fluid used is a mineral oil with a viscosity of 46 m²/s at 40°C. The tests have been carried out at a fluid temperature of 50°C

Curve 3 = Piloted side flow

Symbols:



Type Code:

