

## Throttle check valves CETOP 3 / NG06 RS-AM3QFABC004



Ruhfus throttle check valves are designed for subplate mounting with an interface in accordance CETOP 3 (NG06) and they are compatible with many other manufacturers. The directional control valves are intended exclusively for use in industrial oil-hydraulic systems.

This valve type is an one way non-compensated throttle valve are fitted with an O-Ring mounting plate which allows its assembly for either input or output regulation. Adjustment is obtained by means of a grub screw or a plastic knob.

They are available in the four regulating configurations shown in the hydraulic diagrams.

The standard valve configuration : allows "meter in" regulation

While it is possible to obtain "meter out" regulation by turning the valve by 180° along its longitudinal axis

The valves are designed for use with DIN 51524 standard hydraulic mineral oils and it is recommended that filters should be fitted to ensure a maximum contamination level of class 10 in accordance with NAS 1638  $\geq 75$ .

# RS-Valves (RS-SV0401-008)

Stand: 19.05.2017 - V1.0

Ruhfus Systemhydraulik GmbH

Büdericher Straße 7

D-41460 Neuss

Telefon +49 (2131) – 914 – 6

Fax +49 (2131) – 914 – 820

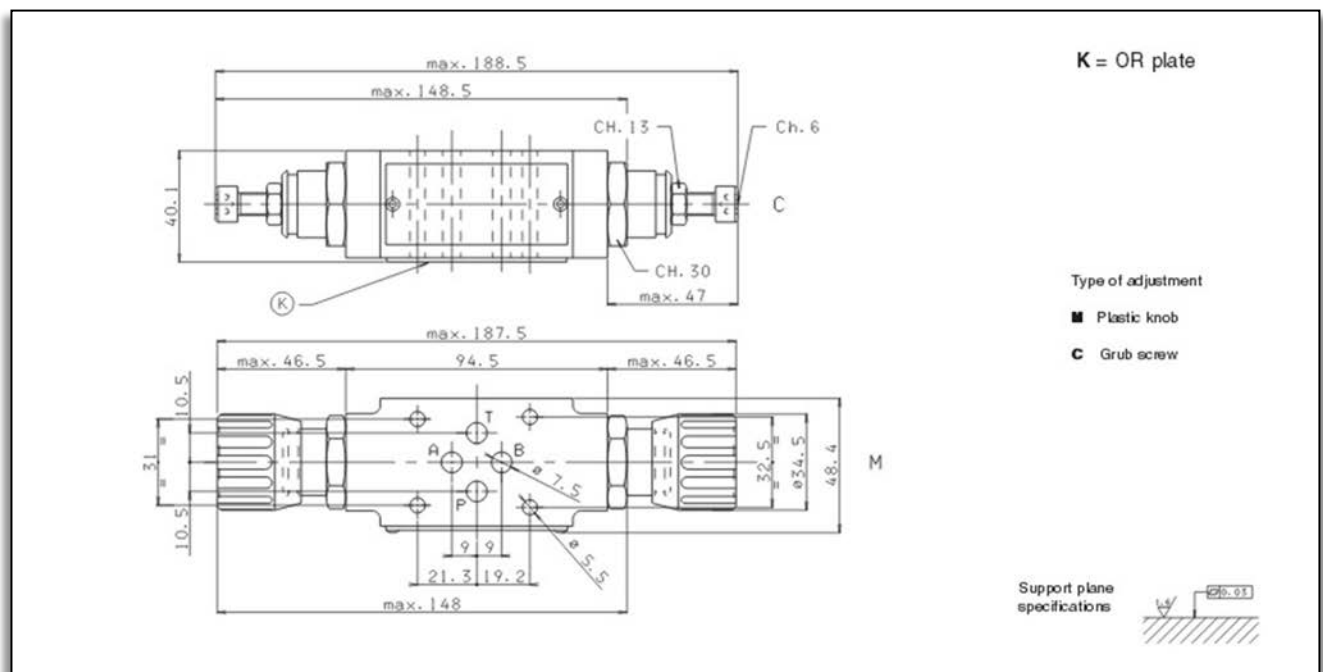
Internet <http://www.ruhfus.com>



## Technical specifications:

Max. operating pressure :	350 bar
Max. pressure adjustable :	250 bar
Flow rate regulation :	on 8 screw turns
Max. flow :	40 l/min
Hydraulic fluids :	Mineral oils DIN 51524
Fluid viscosity :	10 – 500 mm <sup>2</sup> /s
Fluid temperature :	- 25°C – 75°C
Ambient temperature :	- 25°C – 60°C
Max. contamination level :	class 10 in accordance with NAS 1638 with filter $\beta_{25} \geq 75$
Weight :	1,5 Kg

## Overall Dimensions:



## Pressure - Flowrate:

# RS-Valves (RS-SV0401-008)

Stand: 19.05.2017 - V1.0

Ruhfus Systemhydraulik GmbH

Büdericher Straße 7

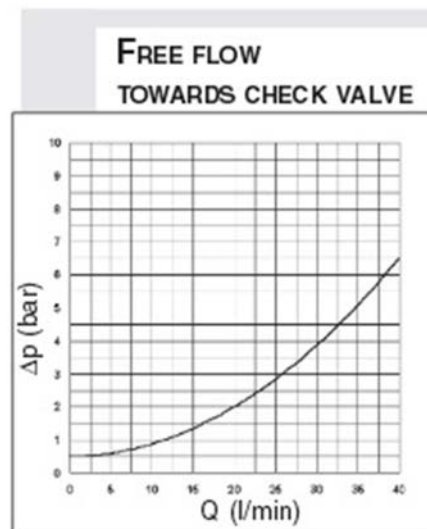
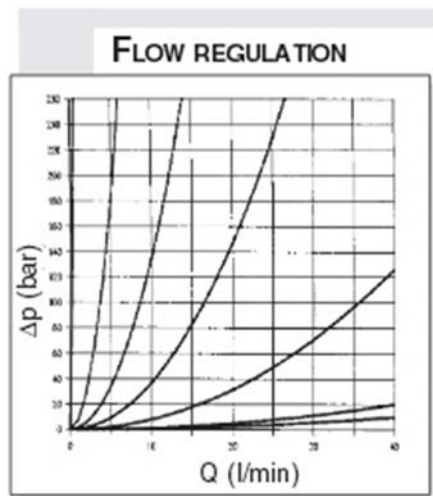
D-41460 Neuss

Telefon +49 (2131) – 914 – 6

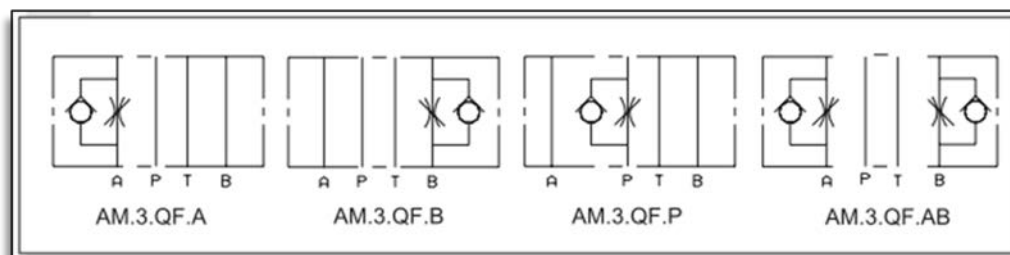
Fax +49 (2131) – 914 – 820

Internet <http://www.ruhfus.com>

**RUHFUS**  
Systemhydraulik



## Symbols:



## Type Code:

