

Modular max. pressure valve CETOP 3 / NG06 RS-AM3VMABC3003



Ruhfus pressure regulating valves are designed for subplate mounting with an interface in accordance CETOP 3 (NG06) and they are compatible with many other manufacturers. The directional control valves are intended exclusively for use in industrial oil-hydraulic systems.

The valves are optimized from their size and they combine compact dimensions with a high flow rate with a maximum capacity.

AM.3.VM and AM.3.VI type pressure regulating valves are available with a pressure range of 2 ÷ 320 bar. Adjustment is by means of a grub screw or a plastic knob. Three basic versions are available:

- **AM.3.VM** = on single **A** or **B** lines, and on **A** and **B** lines, with drainage to **T**
- **AM.3.VM.P** = on single **P** line, with drainage to **T**
- **AM.3.VI** = on single **A** or **B** lines, and on **A** and **B** lines, with crossed drainage on **A** or **B** (see hydraulic symbols)

All versions can accept three types of springs with calibrated ranges as shown in the specifications. The cartridge, which is the same for all versions, is the direct acting type CMP10.

For the minimum permissible setting pressure depending on the spring, see minimum pressure setting curve.

The valves are designed for use with DIN 51524 standard hydraulic mineral oils and it is recommended that filters should be fitted to ensure a maximum contamination level of class 10 in accordance with NAS 1638 ≥75.

RS-Valves (RS-SV0301-012)

Stand: 19.05.2017 - V1.0

Ruhfus Systemhydraulik GmbH

Büdericher Straße 7

D-41460 Neuss

Telefon +49 (2131) – 914 – 6

Fax +49 (2131) – 914 – 820

Internet <http://www.ruhfus.com>

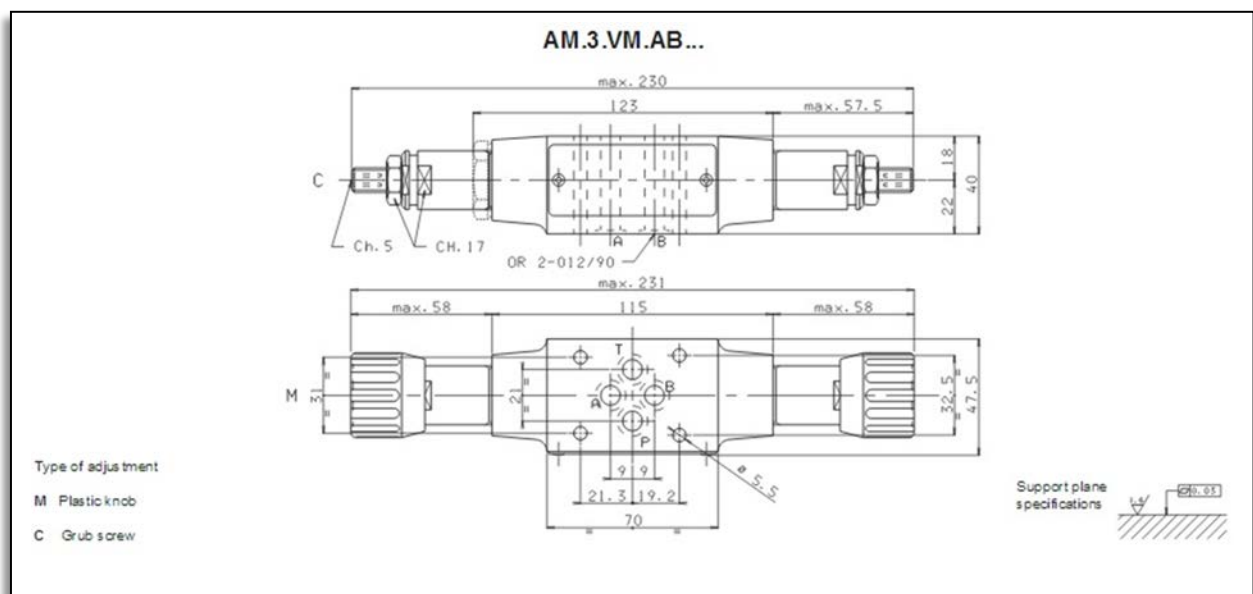
RUHFUS
Systemhydraulik



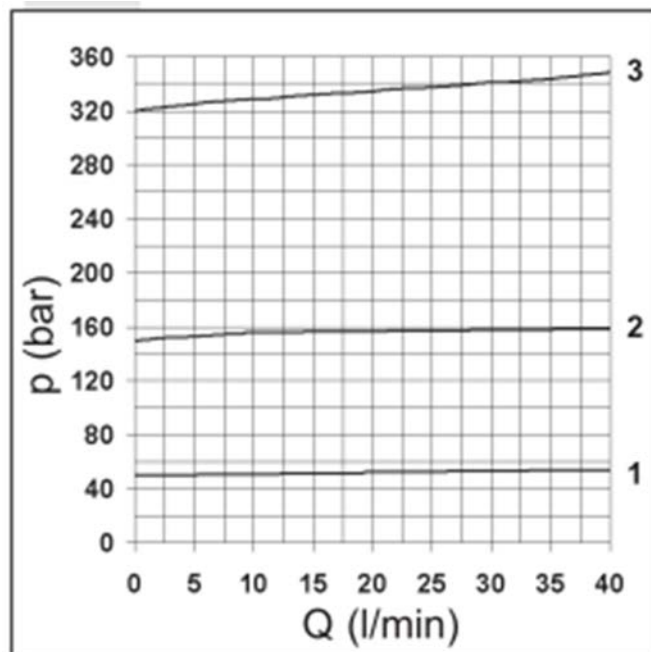
Technical specifications:

Max. operating pressure:	320 bar
Setting ranges :	
spring 1	max. 50 bar
spring 2	max. 150 bar
spring 3	max. 320 bar
Max. flow :	40 l/min
Hydraulic fluids :	Mineral oils DIN 51524
Fluid viscosity :	10 – 500 mm ² /s
Fluid temperature :	- 25°C – 75°C
Ambient temperature :	- 25°C – 60°C
Max. contamination level :	class 10 in accordance with NAS 1638 with filter $\beta_{25} \geq 75$
Weight AM.3.VM.A / B / P...	1,2 Kg
Weight AM.3.VM.AB	1,3 Kg
Weight AM.3.VI.A/B	2,0 Kg
Weight AM.3.VI.AB	2,2 Kg

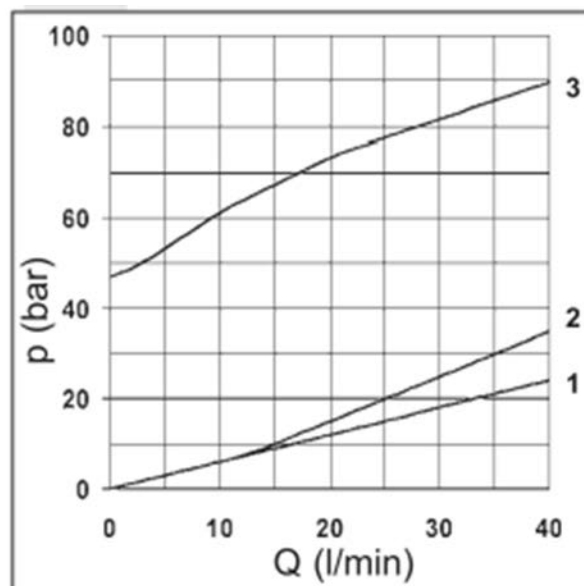
Overall Dimensions:



Pressure - Flowrate:



Min. settingranges pressure:



Curves 1 - 2 - 3 = setting ranges

RS-Valves (RS-SV0301-012)

Stand: 19.05.2017 - V1.0

Ruhfus Systemhydraulik GmbH

Büdericher Straße 7

D-41460 Neuss

Telefon +49 (2131) – 914 – 6

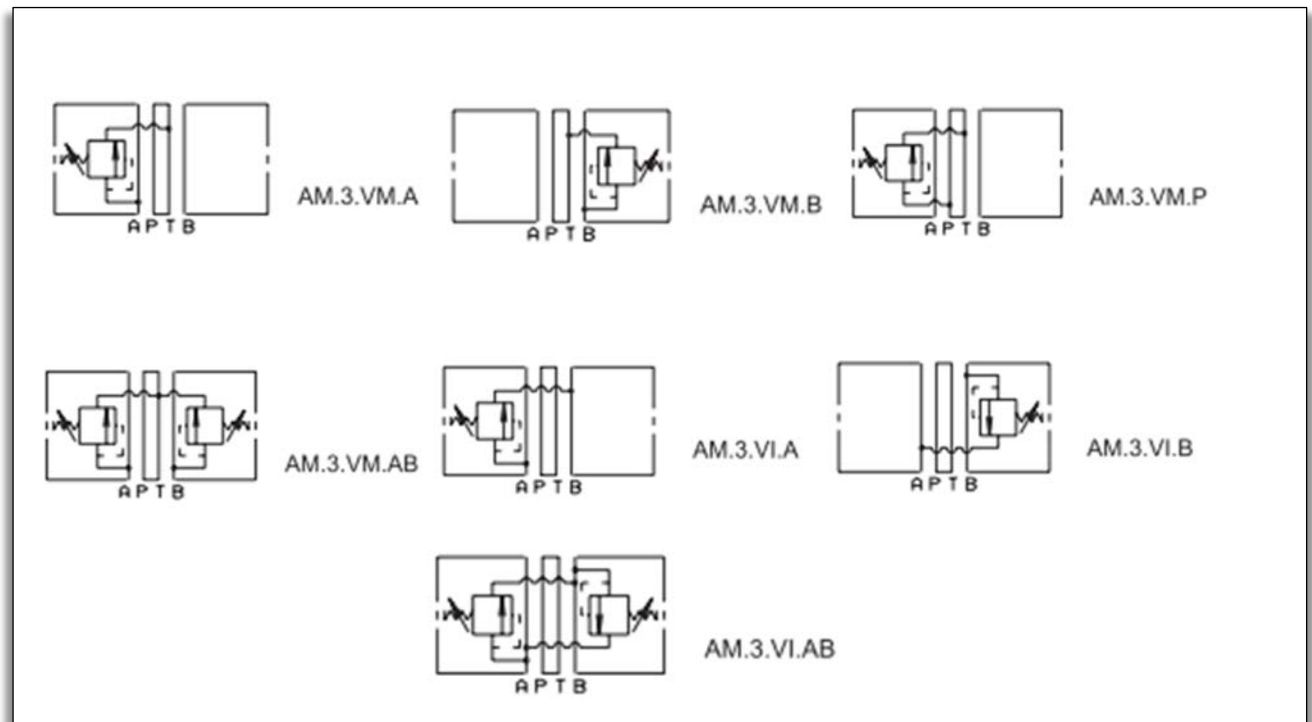
Fax +49 (2131) – 914 – 820

Internet <http://www.ruhfus.com>

RUHFUS
Systemhydraulik



Symbols:



Type Code:

